

Customer: **Villa Point**

Job: _____ Date: _____

Color: _____ Finish: _____

Color Approved By: _____



STR#6320

BEHR

BASE: 2-9050,9050
PP EXTERIOR SATIN/SATIN
(330C-1) HONEYSUCKLE WHITE

| CLRNT | AXL | IL | TL | | | |
|-------|-----|----|----|--|--|--|
| 0Z | 0 | 0 | 0 | | | |
| 384th | 48 | 8 | 40 | | | |

GALLON- 11/20/2012 (JS)

632012185776

NOT RETURNABLE

Body

STR#6320

BEHR

BASE: 2-9050,9050
PP EXTERIOR SATIN/SATIN
(1852) WHITE 1852

| CLRNT | BL | LL | | | | |
|-------|----|----|--|--|--|--|
| 0Z | 0 | 0 | | | | |
| 384th | 12 | 52 | | | | |

GALLON- 11/20/2012 (JS)

632012185777

NOT RETURNABLE

Doors

STR#6320

BEHR

BASE: 2-9340,9340
PP EXTERIOR SATIN/SATIN
(DP-387) ADOBE BROWN DP

| CLRNT | BL | CL | IL | KXL | | |
|-------|-----|-----|-----|-----|--|--|
| 0Z | 0 | 1 | 1 | 5 | | |
| 384th | 284 | 140 | 208 | 148 | | |

GALLON- 11/20/2012 (JS)

632012185778

NOT RETURNABLE

TRIM

STR#6320

BEHR

BASE: 5013
PREM S COLR WD STAIN/STAIN SOLI
(SC-148) ADOBE BROWN

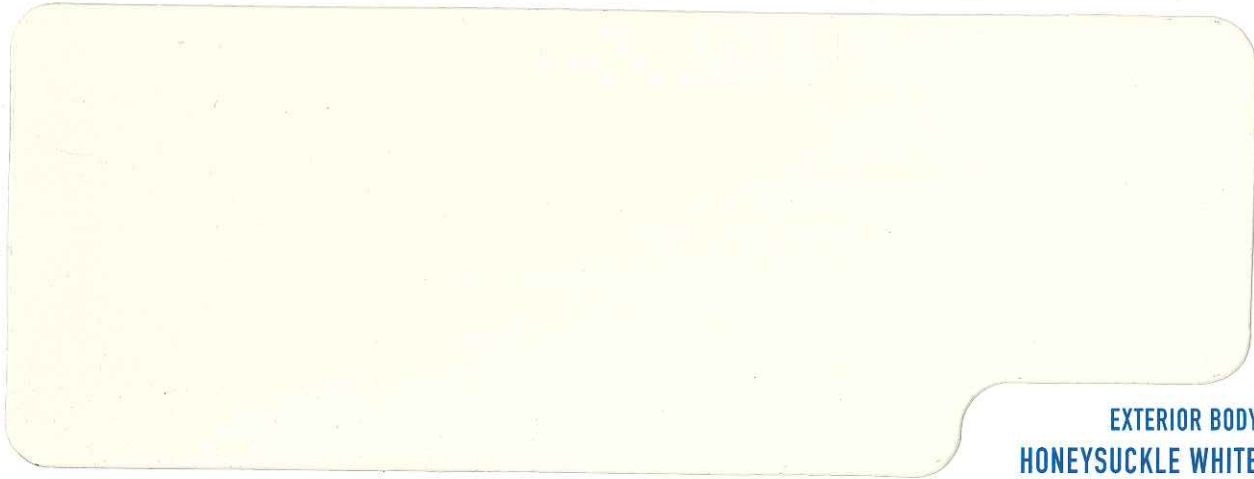
| CLRNT | CL | IL | KXL | LL | | |
|-------|-----|-----|-----|----|--|--|
| 0Z | 0 | 0 | 3 | 3 | | |
| 384th | 174 | 260 | 304 | 60 | | |

GALLON- 11/20/2012 (JS)

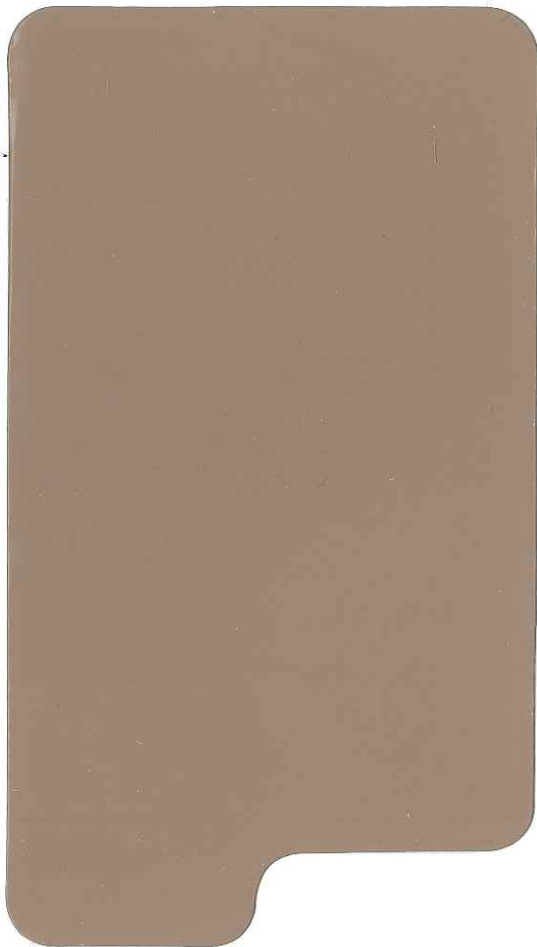
632012185779

NOT RETURNABLE

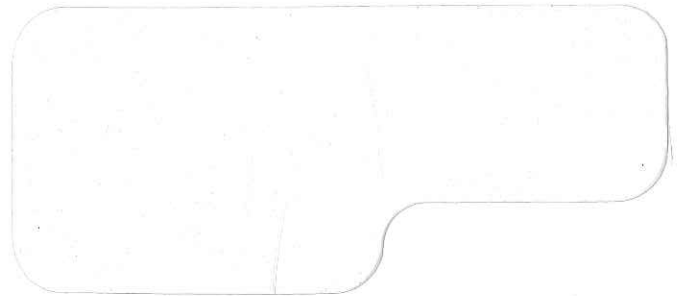
FENCE



EXTERIOR BODY
HONEYSUCKLE WHITE 330C-1



EXTERIOR TRIM
ADOBE BROWN DP-387



EXTERIOR DOORS
WHITE 1852



EXTERIOR FENCE
ADOBE BROWN ST-148

The Digital Rendering above is only a representative of the final color. Variations in screen resolution, lighting and print can create differences between the actual color chip or sample.

All trademarks, color, numbers and color names are the property of their own respective owners.